



Drawn by E. S. Glover. Published by C. K. Wells, Helena, M. T.

Entered according to Act of Congress in the year
of Congress at V

75-694669

REFERENCES:

HELENA—The Metropolis and Capital of Montana, has a population of about 6,000 inhabitants. Publishes three Daily Newspapers and has several Banking Houses, and numerous blocks of Brick and Stone Stores and Warehouses.

Its Manufactories comprise—Planing Mills, Sash, Door and Blind Factories, Foundries and Machine Shops, Flouring Mills, Sampling and Smelting Works, Breweries, Distillery, &c.

THE PRINCIPAL PUBLIC BUILDINGS ARE

- | | |
|---|-------------------------------|
| No. 1. Public School House. | No. 2. St. Vincent's Academy. |
| " 3. U. S. Assay Office. | " 4. County Court House. |
| " 5. County Jail Building. | " 6. Masonic Hall. |
| " 7. Post Office. | " 8. Watch Tower. |
| No. 9. St. John's Hospital and Insane Asylum. | |

BIRDS-EYE

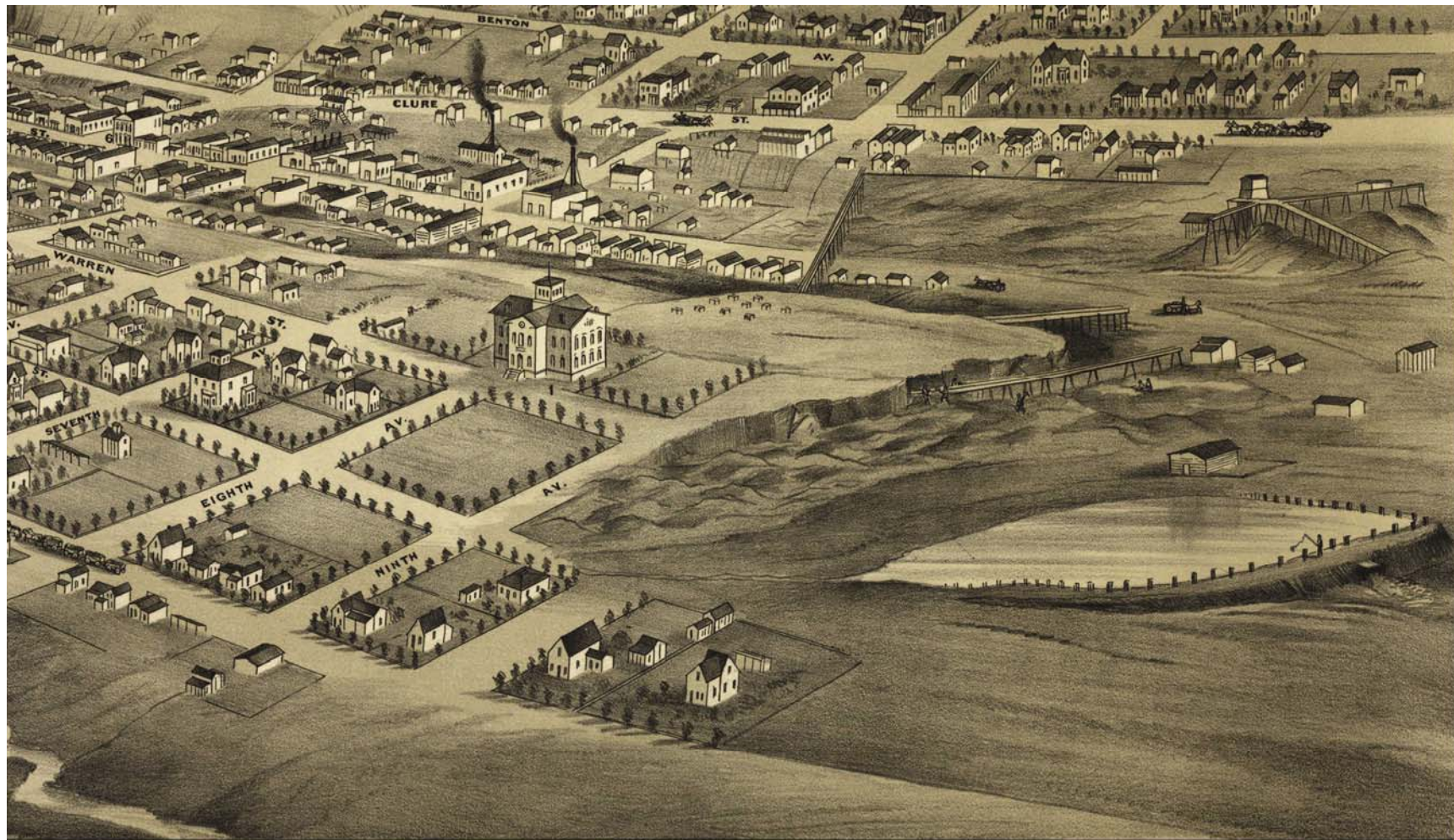
HELENA

MONTANA

187

From the North-East





near 1875, by C. K. Wells, in the office of the Librarian
at Washington, D. C.

A. L. Bancroft & Co., Lithographers, San Francisco, California.

A VIEW OF

HELENA,

MONTANA.

1875.

Looking South-West.

REFERENCES:

HELENA was located in 1863, the center of Montana Mining operations, whose Mineral Produce, in Gold and Silver, have reached from ten to fifteen Millions of Dollars per annum, and are only partially developed.

The distance, per stage coach, from Railway connection is about four hundred miles; but several Railroads are in immediate prospect and will soon be pushed forward.
Helena has four fine churches and a Public Library of 1,000 volumes.

THE CHURCH BUILDINGS ARE

- | | |
|----------------------------------|------------------------------------|
| No. 10. Presbyterian. | No. 11. Methodist Episcopal South. |
| " 12. Methodist Episcopal North. | " 13. Catholic Church. |

The mouth of Grizley Gulch is shown at the left, and Helena Mountain to the right hand.
No. 14 shows the location of the Hangman's Tree in Dry Gulch.

G4254
.H5A3
1875
.G6